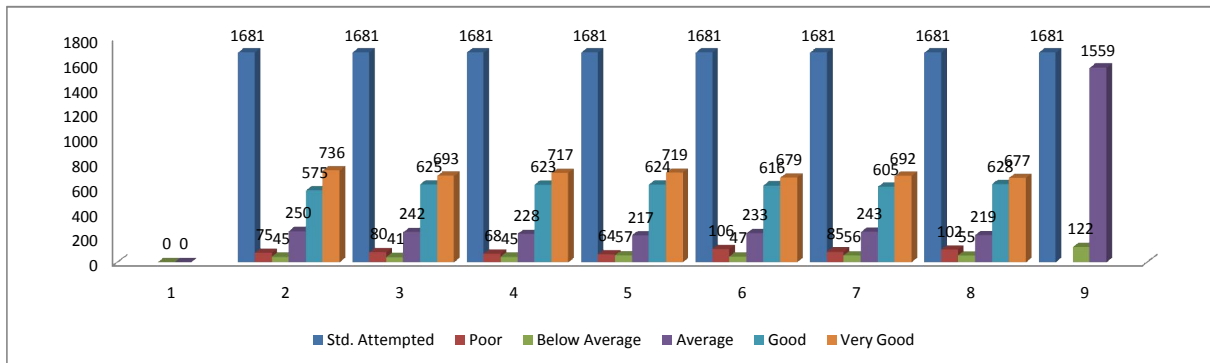
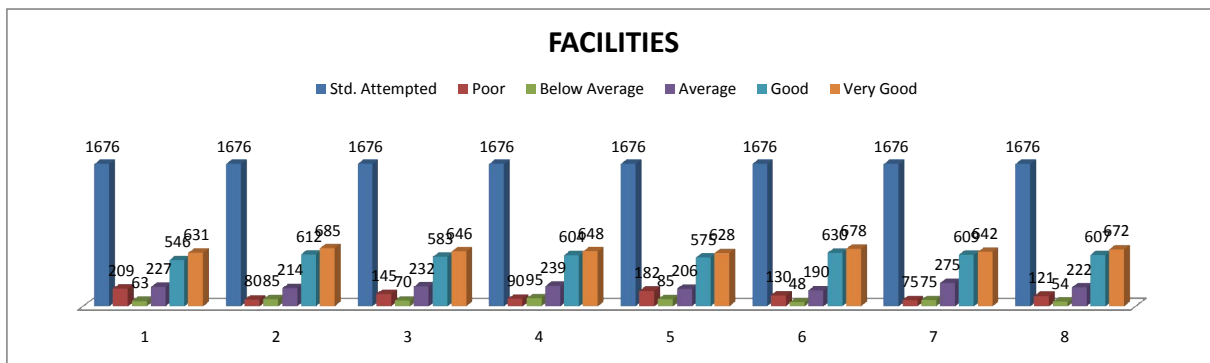


FEEDBACK ANALYSIS

| Administration | | | | | | |
|---|----------------|------|---------------|---------|------|-----------|
| Questions | Std. Attempted | Poor | Below Average | Average | Good | Very Good |
| Admission Process of the college | 1681 | 75 | 45 | 250 | 575 | 736 |
| Notice and information updation by the administration | 1681 | 80 | 41 | 242 | 625 | 693 |
| Responses by the Principal to student related matters | 1681 | 68 | 45 | 228 | 623 | 717 |
| Responses by the Head of the Dept. to students' centric matters | 1681 | 64 | 57 | 217 | 624 | 719 |
| Responses by the Librarian to students' need | 1681 | 106 | 47 | 233 | 616 | 679 |
| Responses by Office Staff to students' need | 1681 | 85 | 56 | 243 | 605 | 692 |
| Responses by Library Staff to students' need | 1681 | 102 | 55 | 219 | 628 | 677 |
| Are girls students secured in the college campus | 1681 | | 122 | 1559 | | |



| FACILITIES | | | | | | |
|----------------------------------|----------------|------|---------------|---------|------|-----------|
| Questions | Std. Attempted | Poor | Below Average | Average | Good | Very Good |
| Internet facility | 1676 | 209 | 63 | 227 | 546 | 631 |
| College website | 1676 | 80 | 85 | 214 | 612 | 685 |
| Sports facilities | 1676 | 145 | 70 | 232 | 583 | 646 |
| Canteen facilities | 1676 | 90 | 95 | 239 | 604 | 648 |
| Students' Common Room facilities | 1676 | 182 | 85 | 206 | 575 | 628 |
| Drinking Water facility | 1676 | 130 | 48 | 190 | 630 | 678 |
| Counseling facilities | 1676 | 75 | 75 | 275 | 609 | 642 |
| Existing library services | 1676 | 121 | 54 | 222 | 607 | 672 |



| EXTRA CURRICULAR ACTIVITIES | | | |
|--|-----|----|----------|
| Questions | Yes | NO | Not Sure |
| Cultural exposure | 99 | 81 | 225 |
| Exposure in debate, quiz and other literary activities | 136 | 95 | 222 |

